

job name:   
 type:

## 9" tiki™ spec sheet 90CRI

### material

#### housing

two-piece precision CNC spun .063" aluminum. downlight housing with rolled bottom edge for added strength. inverted bell uplight element.

#### downlight array platform

.080" spun aluminum.

#### bottom lens (optional)

.125" P95 frosted acrylic flat lens with 3 finger holes.

### optics

#### uplight (optional)

340° omnidirectional silicone optic

#### downlight

.050" spun aluminum conical reflector finished in high reflectance (>92%) matte white powder coat.

### LED module

COB array in 2700K, 3000K, 3500K, or 4000K. (call factory for 5000K) (90+ cri standard). under normal operating conditions, the LEDs employed are rated for >50,000hrs L70 (6.8K) per IES TM-21 from LM-80 test data.

### driver

integral, class 2, universal input (120-277v), constant current, 0-10v dimming, 1% minimum dimming level, PF >.9, THD <20%, protections include open and short circuit, overload and over temperature.

### mounting

5"dia. spun steel canopy in satin white with 6ft stainless steel cable tripod and field adjustable grippers that allow for exact AFF mounting heights. or select 12ft adjustable suspension. (drawing below)

### finish

select from standard powder coat paint finishes or specify RAL# for custom colors.

### emergency

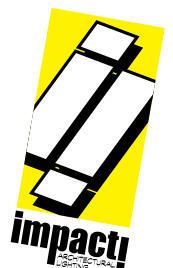
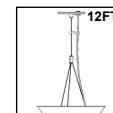
recommend use of inverter (by other).

optional WREM: wired for remote EM battery (by other). 2nd power cord required.



## catalog number

P5109						
<b>size</b> <b>P5109</b> 9"dia X 11.25"ht  see pages 2 & 3 for info on P5113 and P5117	<b>direct LED</b> CCT lumens <b>27</b> 2700K <b>LO</b> 995 lm <b>30</b> 3000K <b>HI</b> 1985 lm <b>35</b> 3500K <b>HX</b> 2780 lm <b>40</b> 4000K	<b>indirect LED</b> CCT lumens <b>27</b> 2700K <b>UP</b> 970 lm <b>30</b> 3000K <b>NUL</b> no uplight <b>35</b> 3500K <b>40</b> 4000K	<b>painting finish</b> <b>AP</b> anodized paint <b>BS</b> brass <b>BU</b> blue <b>BZ</b> bronze <b>CP</b> champagne <b>FB</b> flat black <b>GM</b> gun metal <b>MB</b> military blue <b>MW</b> matte white <b>OR</b> orange <b>RD</b> red <b>SB</b> satin black <b>SS</b> satin silver <b>TG</b> textured gray <b>YO</b> yellow	<b>power cord</b> <b>WHPC</b> white power cord and canopy <b>BKPC</b> black power cord and canopy <b>SBPC</b> silver braid power cord and white canopy	<b>options</b> <b>6FT</b> 72" cables <b>12FT</b> 12ft adj suspension <b>BL</b> Bottom lens <b>DCDM</b> dual circuit wiring on dimming direct/indirect (requires 2nd power cord) <b>WREM</b> wired for remote EM battery pack (by other) (see note above) <b>ELD</b> EldoLED* <b>LUT</b> Lutron*  *consult factory	<b>premium finish</b> <b>RAL</b> specify RAL#



job name:   
 type:

# 13" tiki™ spec sheet 90CRI

**material**

**housing**

two-piece precision CNC spun .063" aluminum. downlight housing with rolled bottom edge for added strength. inverted bell uplight element.

**downlight array platform**

.080" spun aluminum.

**bottom lens** (optional)

.125" P95 frosted acrylic flat lens with 3 finger holes.

**optics**

**uplight** (optional)

340° omnidirectional silicone optic

**downlight**

.050" spun aluminum conical reflector finished in high reflectance (>92%) matte white powder coat.

**LED module**

COB array in 2700K, 3000K, 3500K, or 4000K. (call factory for 5000K) (90+ cri standard). under normal operating conditions, the LEDs employed are rated for >50,000hrs L70 (6.8K) per IES TM-21 from LM-80 test data. for dual circuit wiring on direct/indirect dimming luminaires, specify under options.

**driver**

integral, programmable, UL class P, class 2, universal input (120-277v), constant current, 0-10v dimming, 1% minimum dimming level, PF >.9, THD <20%, protections include open and short circuit, overload and over temperature.

**mounting**

5"dia. spun steel canopy in satin white with 6ft stainless steel cable tripod and field adjustable grippers that allow for exact AFF mounting heights. or select 12ft adjustable suspension. (drawing below)

**finish**

select from standard powder coat paint finishes listed below or specify RAL# for custom colors.

**emergency**

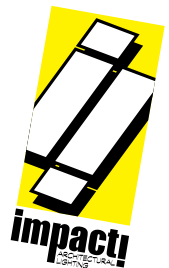
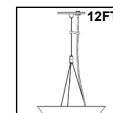
recommend use of inverter (by other).

optional WREM: wired for remote EM battery (by other). 2nd power cord required.



## catalog number

<b>P5113</b>						
<b>size</b> <b>P5113</b> 13"dia X 16"ht  see page 3 for info on P5117	<b>direct LED</b> <b>CCT lumens</b> <b>27</b> 2700K <b>FX</b> 1585 lm <b>30</b> 3000K <b>LO</b> 2975 lm <b>35</b> 3500K <b>HI</b> 3375 lm <b>40</b> 4000K <b>HX</b> 4120 lm  <b>CL*</b> xxxx lm custom lumens consult factory	<b>indirect LED</b> <b>CCT lumens</b> <b>27</b> 2700K <b>FX</b> 775 lm <b>30</b> 3000K <b>LO</b> 1745 lm <b>35</b> 3500K <b>HI</b> 1940 lm <b>40</b> 4000K <b>NUL</b> no uplight  <b>CL*</b> xxxx lm custom lumens consult factory	<b>painting finish</b> <b>AP</b> anodized paint <b>BS</b> brass <b>BU</b> blue <b>BZ</b> bronze <b>CP</b> champagne <b>FB</b> flat black <b>GM</b> gun metal <b>MB</b> military blue <b>MW</b> matte white <b>OR</b> orange <b>RD</b> red <b>SB</b> satin black <b>SS</b> satin silver <b>TG</b> textured gray <b>YO</b> yellow  <b>premium finish</b> <b>RAL</b> specify RAL#	<b>power cord</b> <b>WHPC</b> white power cord and canopy <b>BKPC</b> black power cord and canopy <b>SBPC</b> silver braid power cord and white canopy	<b>options</b> <b>6FT</b> 72" cables <b>12FT</b> 12ft adj suspension <b>BL</b> Bottom lens <b>DCDM</b> dual circuit wiring on dimming direct/indirect (requires 2nd power cord) <b>WREM</b> wired for remote EM battery pack (by other) (see note above) <b>ELD</b> EldoLED* <b>LUT</b> Lutron*  *consult factory	



job name:   
 type:

# 17" tiki™ spec sheet 90CRI

**material**

**housing**

two-piece precision CNC spun .063" aluminum. downlight housing with rolled bottom edge for added strength. inverted bell uplight element.

**downlight array platform**

.080" spun aluminum.

**bottom lens** (optional)

.125" P95 frosted acrylic flat lens with 3 finger holes.

**optics**

**uplight** (optional)

340° omnidirectional silicone optic

**downlight**

.050" spun aluminum conical reflector finished in high reflectance (>92%) matte white powder coat.

**LED module**

COB array in 2700K, 3000K, 3500K, or 4000K. (call factory for 5000K) (90+ cri standard). under normal operating conditions, the LEDs employed are rated for >50,000hrs L70 (6.8K) per IES TM-21 from LM-80 test data. for dual circuit wiring on direct/indirect dimming luminaires, specify under options.

**driver**

integral, programmable, UL class P, class 2, universal input (120-277v), constant current, 0-10v dimming, 1% minimum dimming level, PF >.9, THD <20%, protections include open and short circuit, overload and over temperature.

**mounting**

5"dia. spun steel canopy in satin white with 6ft stainless steel cable tripod and field adjustable grippers that allow for exact AFF mounting heights. or select 12ft adjustable suspension. (drawing below)

**finish**

select from standard powder coat paint finishes listed below or specify RAL# for custom colors.

**emergency**

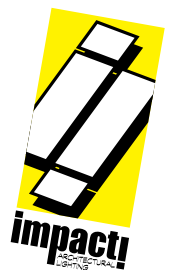
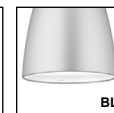
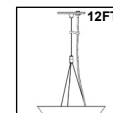
recommend use of inverter (by other).

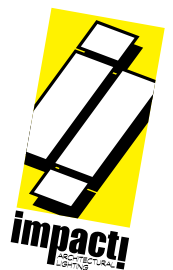
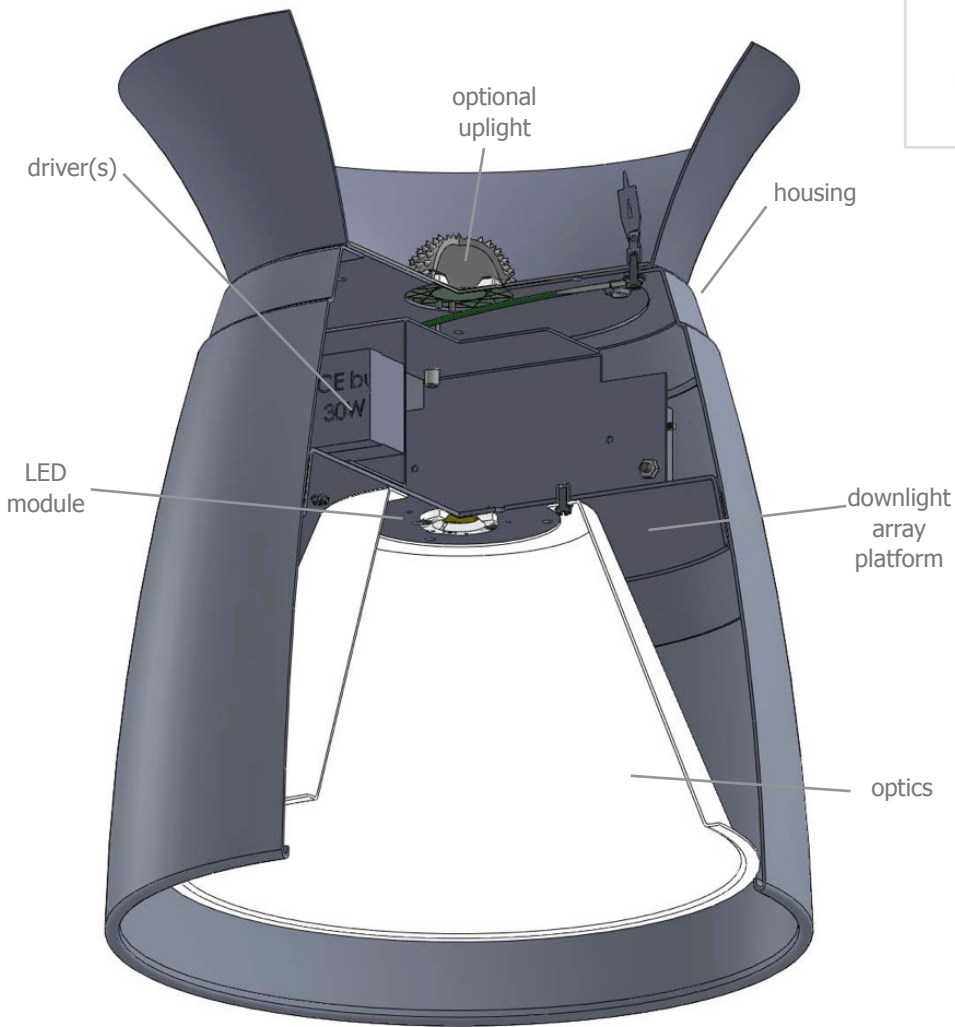
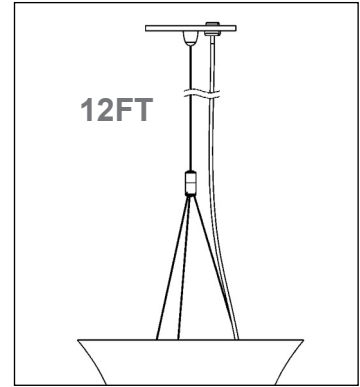
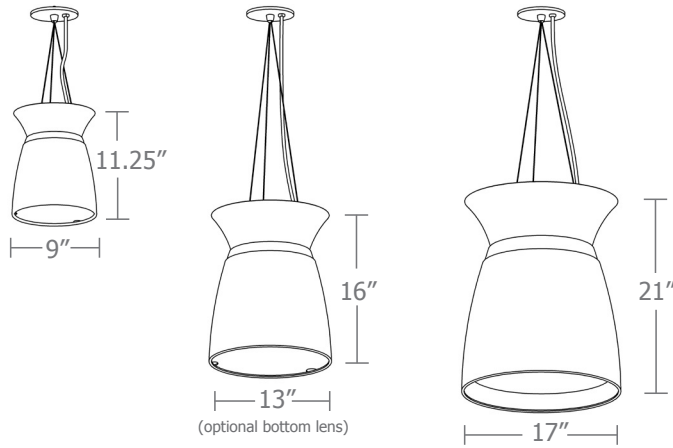
optional WREM: wired for remote EM battery (by other). 2nd power cord required.



## catalog number

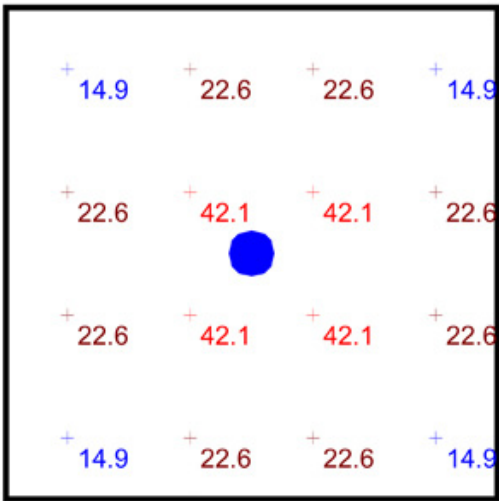
<b>P5117</b>  <b>size</b> <b>P5117</b> 17"dia X 21"ht	<b>direct LED</b> <b>CCT lumens</b> <b>27</b> 2700K <b>FX</b> 2580 lm  <b>30</b> 3000K <b>LO</b> 3375 lm  <b>35</b> 3500K <b>HI</b> 4550 lm  <b>40</b> 4000K <b>HX</b> 4985 lm  <b>CL*</b> xxxx lm <small>custom lumens consult factory</small>	<b>indirect LED</b> <b>CCT lumens</b> <b>27</b> 2700K <b>FX</b> 775 lm  <b>30</b> 3000K <b>LO</b> 1550 lm  <b>35</b> 3500K <b>HI</b> 2135 lm  <b>40</b> 4000K <b>NUL</b> no uplight  <b>CL*</b> xxxx lm <small>custom lumens consult factory</small>	<b>painting finish</b>  <b>AP</b> anodized paint <b>BS</b> brass <b>BU</b> blue <b>BZ</b> bronze <b>CP</b> champagne <b>FB</b> flat black <b>GM</b> gun metal <b>MB</b> military blue <b>MW</b> matte white <b>OR</b> orange <b>RD</b> red <b>SB</b> satin black <b>SS</b> satin silver <b>TG</b> textured gray <b>YO</b> yellow  <b>premium finish</b> <b>RAL</b> specify RAL#	<b>power cord</b>  <b>WHPC</b> white power cord and canopy <b>BKPC</b> black power cord and canopy <b>SBPC</b> silver braid power cord and white canopy	<b>options</b>  <b>6FT</b> 72" cables <b>12FT</b> 12ft adj suspension <b>BL</b> Bottom lens <b>DCDM</b> dual circuit wiring on dimming direct/indirect (requires 2nd power cord)  <b>WREM</b> wired for remote EM battery pack (by other) (see note above)  <b>ELD</b> EldoLED* <b>LUT</b> Lutron*  <small>*consult factory</small>
---	--	--	--	---	---





## Quick Calc Typical Lighting Layout

- 8' x 8' x 10'H space
- 80/50/20 reflectances
- bottom of fixture at 8' aff
- FC readings at 2.5' aff
- layout conducted using P5109-HX-UP (2780 direct / 970 indirect delivered lumens)-BL

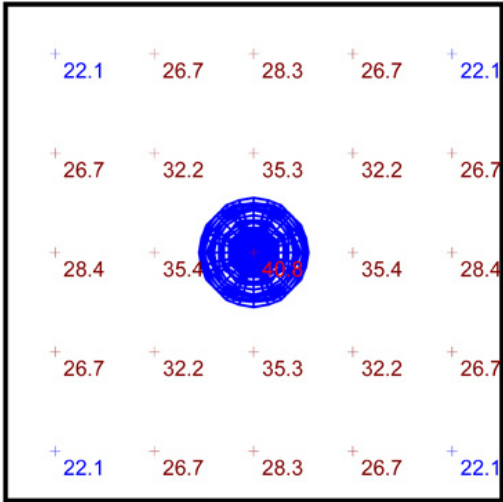


Plan View  
Scale - 1" = 2ft

Statistics						
Description	Symbol	Avg	Max	Min	Max/Min	Avg/Min
tiki	+	25.5 fc	42.1 fc	14.9 fc	2.8:1	1.7:1

## Advanced Calculation Typical Lighting Layout

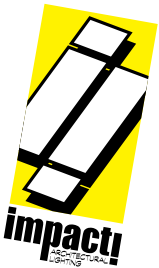
- 10' x 10' x 20'H space
- 80/50/20 reflectances
- 90 CRI
- bottom of fixture at 14' aff (lensed bottom)
- FC readings at 2.5' aff
- layout conducted using two separate independent photometric files. Downlight is 4985 lumen HX output, while the Uplight is 2135 lumen HI output.



Plan View  
Scale - 1" = 2ft

Schedule							
Symbol	Label	Quantity	Manufacturer	Catalog Number	Description	Lamp	Number Lamps
	A	1	Impact Architectural Lighting	P5117-40HI-NUL-BL (Down light only optics)	Photometrics for downlight only portion of 17" dia. tiki pendant w/ bottom lens	4000k LED 90 CRI	1
	B	1	Impact Architectural Lighting	P5117-NDL-40HI (Uplight only optics)	Photometrics for uplight only portion of 17" tiki pendant	4000k LED 90 CRI	1

Statistics						
Description	Avg	Symbol	Max	Min	Max/Min	Avg/Min
tiki adv separate ies files	29.1 fc	+	40.8 fc	22.1 fc	1.8:1	1.3:1



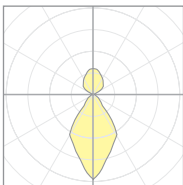
# Quick Calc Table

Tests indicated below are a combination of direct and indirect. LLF are as close as possible.

for more detailed calculations see table on next page.

Cat No	Direct Delivered* Lumens	Indirect Delivered* Lumens	Watts 120V / 277V	IES File #	LLF to be applied
<b>P5109 LO UP</b>	995	970	20	<b>20155</b> open	.59
				<b>20154</b> lensed	.55
<b>P5109 HI UP</b>	1985	970	30	<b>20155</b> open	.86
				<b>20154</b> lensed	.82
<b>P5109 HX UP</b>	2780	970	39	<b>20155</b> open	1.09
				<b>20154</b> lensed	1.03
<b>P5113 FX FX</b>	1585	775	24	<b>20619.1</b> open	.42
				<b>20620.1</b> lensed	.39
<b>P5113 LO LO</b>	2975	1745	49	<b>20619.1</b> open	.83
				<b>20620.1</b> lensed	.73
<b>P5113 HI HI</b>	3375	1940	55	<b>20619.1</b> open	.94
				<b>20620.1</b> lensed	.87
<b>P5113 HX HI</b>	4120	1940	62	<b>20619.1</b> open	1.07
				<b>20620.1</b> lensed	.99
<b>P5117 FX FX</b>	2580	775	35	<b>20689</b> open	.54
				<b>20620.1</b> lensed	.55
<b>P5117 LO LO</b>	3375	1550	51	<b>20689</b> open	.79
				<b>20620.1</b> lensed	.81
<b>P5117 HI HI</b>	4550	2135	68	<b>20689</b> open	1.07
				<b>20620.1</b> lensed	1.09
<b>P5117 HX HI</b>	4985	2135	73	<b>20689</b> open	1.14
				<b>20620.1</b> lensed	1.17

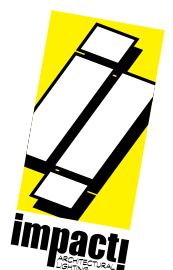
\*delivered lumens based on 4000K, 90+ cri



20689  
P5117-40CL (4000lm) 40HI

The application of a Light Loss Factor is required to:

- match the lumen output for the power module specified
- incorporate the increased lumen output due to LED/Driver upgrades



# Advanced Calculation Table

Tests are for each element separately and must be "stacked" to represent single fixture  
Consult factory for applications assistance

## Direct

Cat No	Delivered* Lumens	Watts 120V/277V	IES File #	LLF to be applied
<b>P5109</b>	<b>LO</b> 995	10	<b>20616.1</b> open	.26
			<b>20617.1</b> lensed	.24
<b>P5109</b>	<b>HI</b> 1985	21	<b>20616.1</b> open	.52
			<b>20617.1</b> lensed	.48
<b>P5109</b>	<b>HX</b> 2780	29	<b>20616.1</b> open	.72
			<b>20617.1</b> lensed	.67

<b>P5113</b>	<b>FX</b> 1585	16	<b>20616.1</b> open	.40
			<b>20617.1</b> lensed	.37
<b>P5113</b>	<b>LO</b> 2975	31	<b>20616.1</b> open	.75
			<b>20617.1</b> lensed	.70
<b>P5113</b>	<b>HI</b> 3375	35	<b>20616.1</b> open	.85
			<b>20617.1</b> lensed	.79
<b>P5113</b>	<b>HX</b> 4126	42	<b>20616.1</b> open	1.08
			<b>20617.1</b> lensed	1.00

<b>P5117</b>	<b>FX</b> 2580	27	<b>20688</b> open	.58
			<b>20617.1</b> lensed	.59
<b>P5117</b>	<b>LO</b> 3375	35	<b>20688</b> open	.76
			<b>20617.1</b> lensed	.77
<b>P5117</b>	<b>HI</b> 4550	47	<b>20688</b> open	1.00
			<b>20617.1</b> lensed	1.01
<b>P5117</b>	<b>HX</b> 4985	51	<b>20688</b> open	1.19
			<b>20617.1</b> lensed	1.21

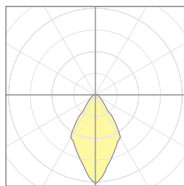
\*delivered lumens based on 4000K, 90+ cri

## Indirect

Delivered* Lumens	Watts 120V/277V	IES File #	LLF to be applied
<b>UP</b> 970	10	<b>20618.1</b>	.51

<b>FX</b> 775	8	<b>20618.1</b>	.41
<b>LO</b> 1745	18	<b>20618.1</b>	.91
<b>HI</b> 1940	20	<b>20618.1</b>	1.01

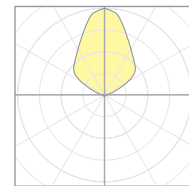
<b>FX</b> 775	8	<b>20618.1</b>	.41
<b>LO</b> 1550	16	<b>20618.1</b>	.81
<b>HI</b> 2135	22	<b>20618.1</b>	1.12



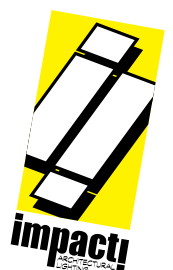
20688  
P5117-40CL (4000lm) NUL

The application of a Light Loss Factor is required to:

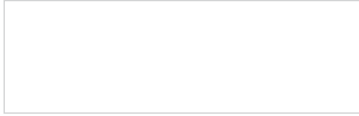
- match the lumen output for the power module specified
- incorporate the increased lumen output due to LED/Driver upgrades



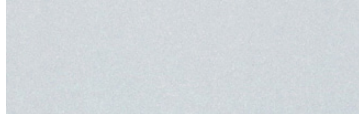
20618.1  
P5113-NDL-40HI



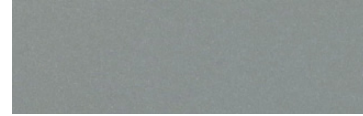
## Powder Coat Paint Finishes



**MW** matte white



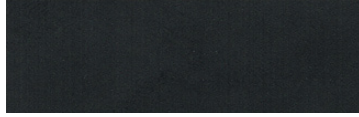
**AP** anodized paint



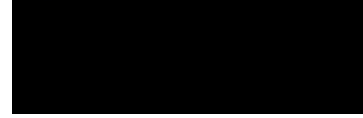
**SS** satin silver



**TG** textured gray



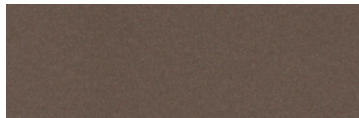
**FB** flat black



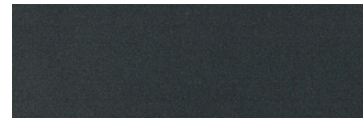
**SB** satin black



**CP** champagne



**BZ** bronze



**GM** gun metal



**OR** orange 2011



**BU** blue 5017



**BS** brass



**RD** red 3020



**YO** yellow 1018



**MB** military blue

For accurate color verification, actual finish samples are available upon request.

## Premium Finishes\*



**RAL#**

\*Available on select series. Consult product submittal for availability.

